

MEM Bath spout for wall mounting - Chrome

MEM

13 801 782



- 220mm projection
- rectangular, air-enriched flow
- rosette 60 x 60 mm
- hole diameter 37 mm
- 1/2" connection
- max. flow 38.5 l/min at 3 bar flow pressure
- WRAS 2203039

| | | |
|---|-------------------------------------|---------------|
|  | Chrome | 13 801 782-00 |
|  | Brushed Platinum | 13 801 782-06 |
|  | Platinum | 13 801 782-08 |
|  | Dark Chrome | 13 801 782-19 |
|  | Brushed Durabrass (23kt Gold) | 13 801 782-28 |
|  | Brushed Champagne (22kt Gold) | 13 801 782-46 |
|  | Champagne (22kt Gold) | 13 801 782-47 |
|  | Brushed Dark Platinum | 13 801 782-99 |

Required miscellaneous

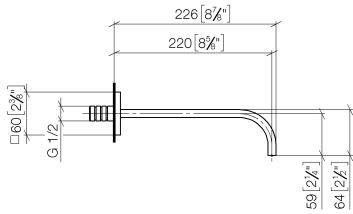
Concealed adapter -

35 080 970-90
0010

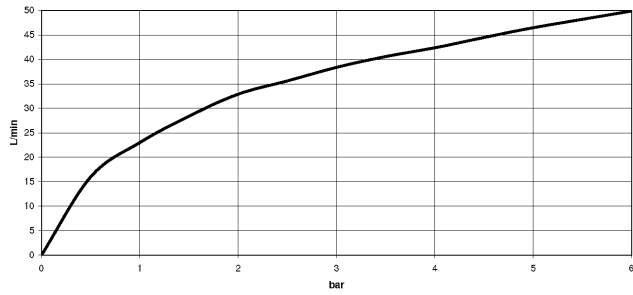


13 801 782

mm [inches]



Flow rate chart



Codes & Standards

ASME
A112.18.1/CSA
B125.1



MEM Bath spout for wall mounting - Chrome

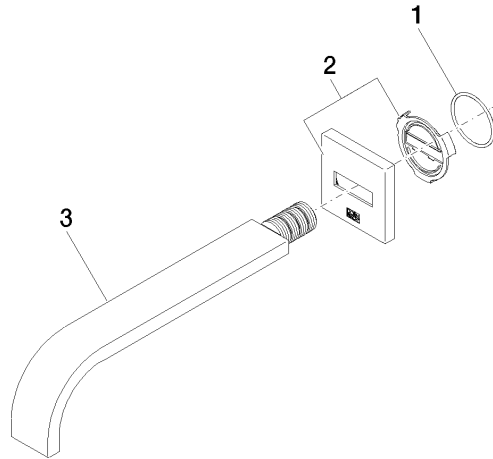
MEM

13 801 782

Certificates

WRAS_2203039. IAPMO_4976 (6).

13 801 782



Spare parts list

| No. | Item Number | Name | Quantity used | Delivery time |
|-----|--------------------|---------|---------------|---------------|
| 1 | 09 14 10 111 90 | seal | 1 | 2 |
| 2 | 90 27 78 035 00-00 | rosette | 1 | 10 |
| 3 | 04 28 22 290 00-00 | spout | 1 | 10 |